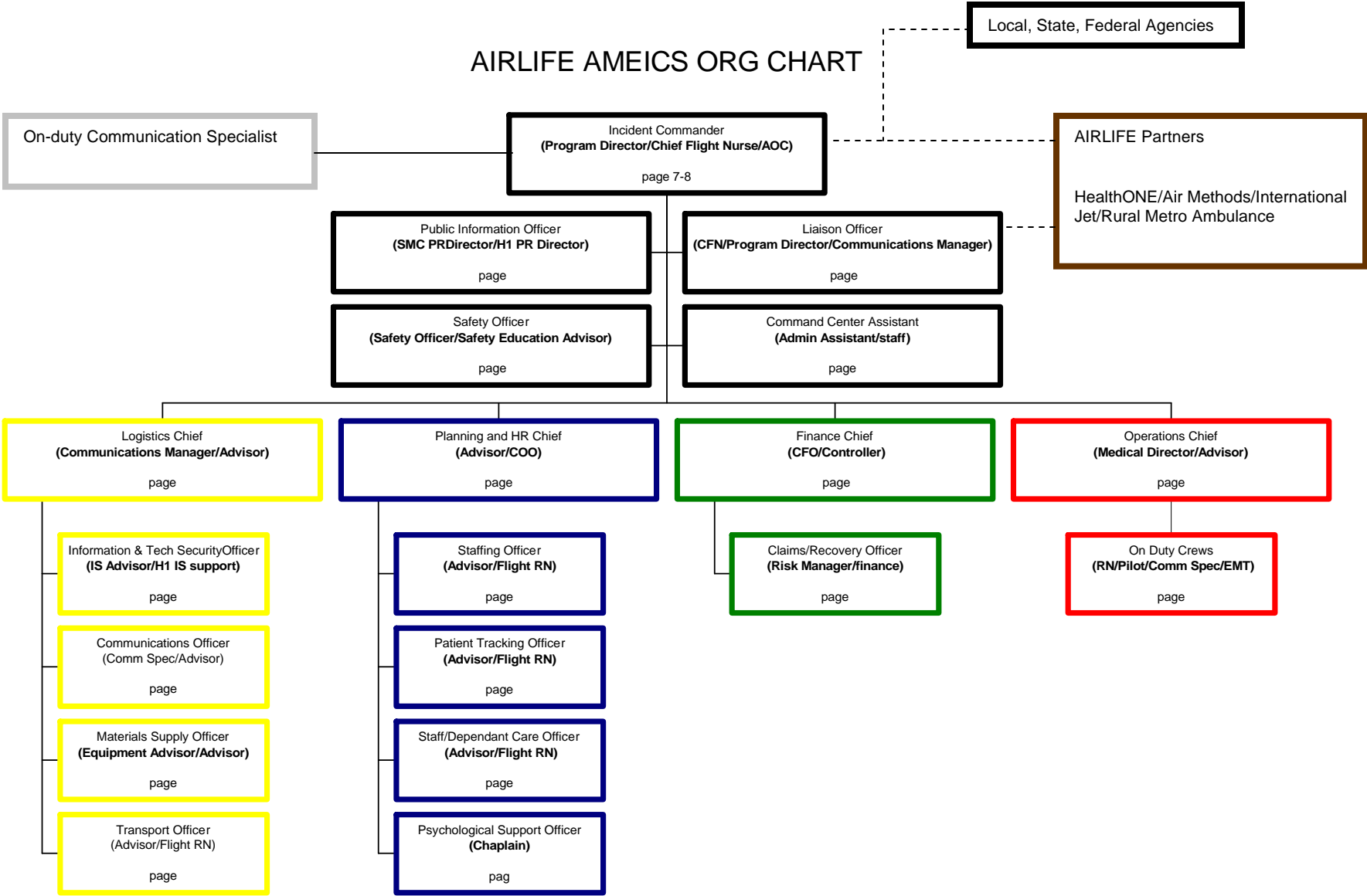


# AIRLIFE AMEICS ORG CHART



On-duty Communication Specialist

Incident Commander  
(Program Director/Chief Flight Nurse/AOC)  
page 7-8

Local, State, Federal Agencies

AIRLIFE Partners  
HealthONE/Air Methods/International  
Jet/Rural Metro Ambulance

Public Information Officer  
(SMC PR Director/H1 PR Director)  
page

Liaison Officer  
(CFN/Program Director/Communications Manager)  
page

Safety Officer  
(Safety Officer/Safety Education Advisor)  
page

Command Center Assistant  
(Admin Assistant/staff)  
page

Logistics Chief  
(Communications Manager/Advisor)  
page

Planning and HR Chief  
(Advisor/COO)  
page

Finance Chief  
(CFO/Controller)  
page

Operations Chief  
(Medical Director/Advisor)  
page

Information & Tech Security Officer  
(IS Advisor/H1 IS support)  
page

Communications Officer  
(Comm Spec/Advisor)  
page

Materials Supply Officer  
(Equipment Advisor/Advisor)  
page

Transport Officer  
(Advisor/Flight RN)  
page

Staffing Officer  
(Advisor/Flight RN)  
page

Patient Tracking Officer  
(Advisor/Flight RN)  
page

Staff/Dependant Care Officer  
(Advisor/Flight RN)  
page

Psychological Support Officer  
(Chaplain)  
pag

Claims/Recovery Officer  
(Risk Manager/finance)  
page

On Duty Crews  
(RN/Pilot/Comm Spec/EMT)  
page